

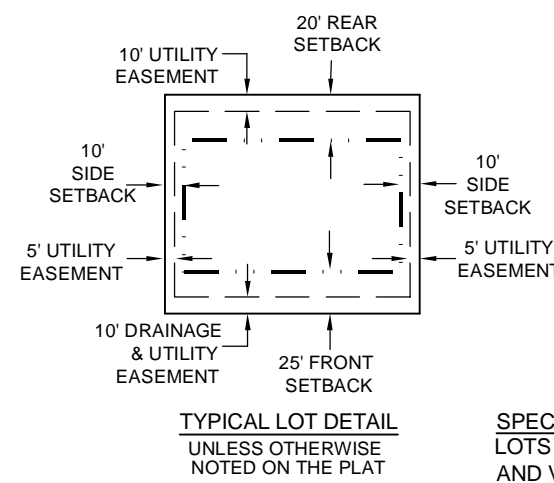
PLAT OF: KENSINGTON - BLOCK "V" @ REUNION

AN ADDITION TO THE CITY OF MADISON
SECTION 26, T-8-N, R-1-E
MADISON COUNTY, MISSISSIPPI

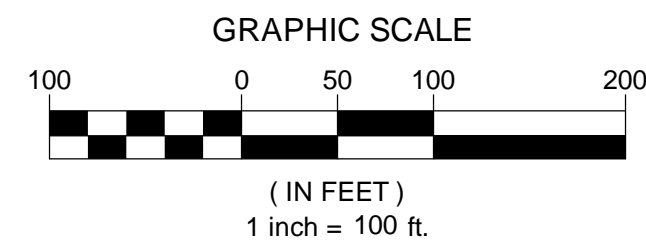
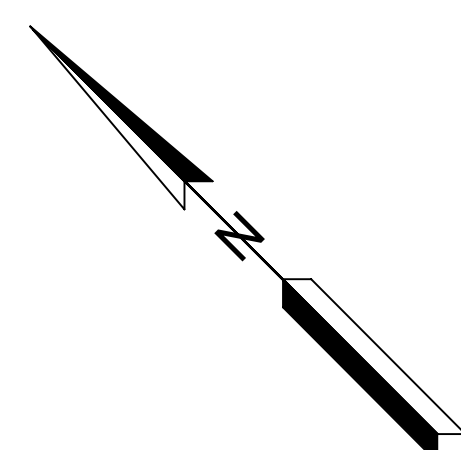
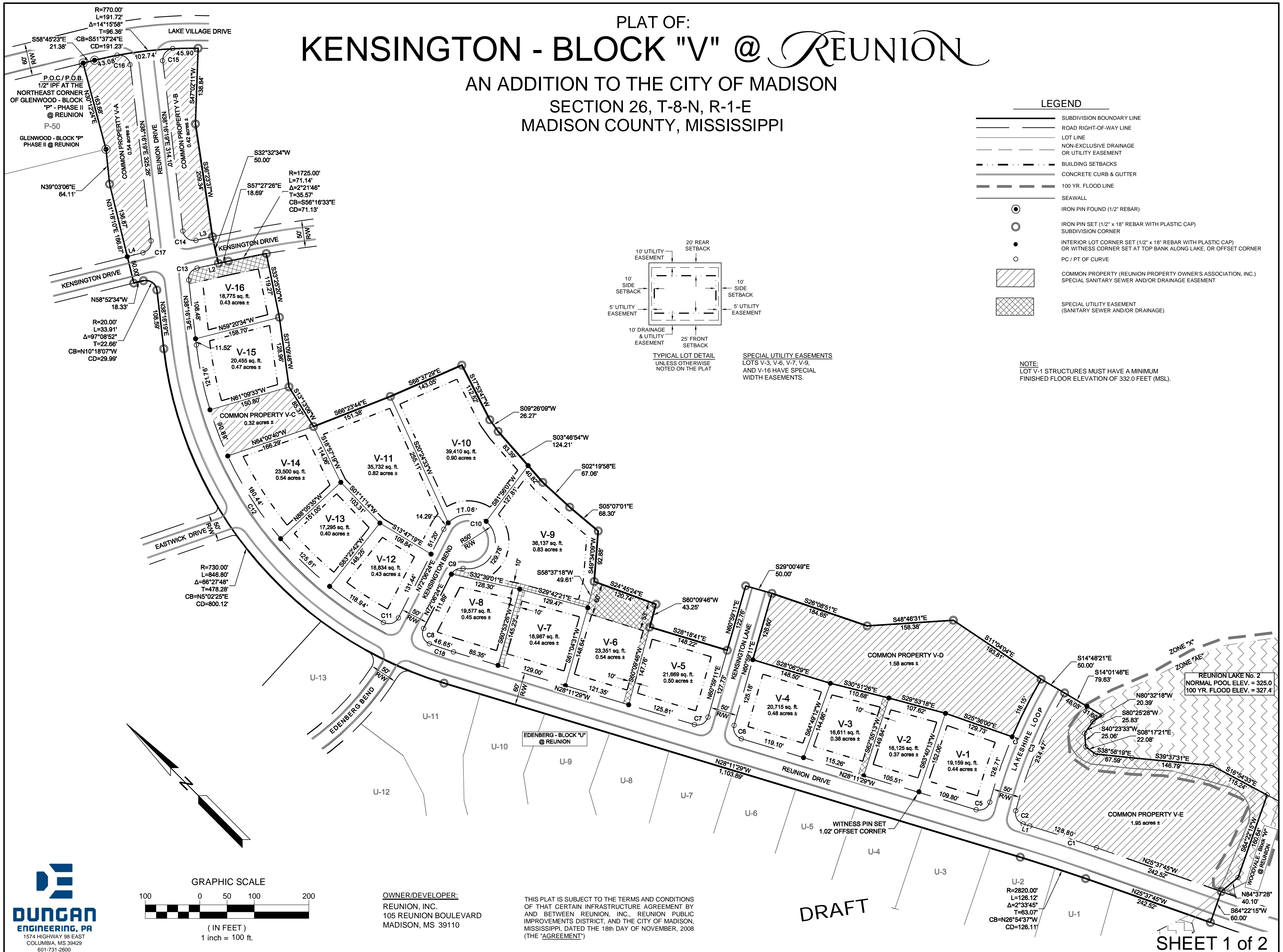
LEGEND

	SUBDIVISION BOUNDARY LINE
	ROAD RIGHT-OF-WAY LINE
	LOT LINE
	NON-EXCLUSIVE DRAINAGE OR UTILITY EASEMENT
	BUILDING SETBACKS
	CONCRETE CURB & GUTTER
	100 YR. FLOOD LINE
	SEAWALL
	IRON PIN FOUND (1/2" REBAR)
	IRON PIN SET (1/2" x 18" REBAR WITH PLASTIC CAP) SUBDIVISION CORNER
	INTERIOR LOT CORNER SET (1/2" x 18" REBAR WITH PLASTIC CAP) OR WITNESS CORNER SET AT TOP BANK ALONG LAKE, OR OFFSET CORNER
	PC / PT OF CURVE
	COMMON PROPERTY (REUNION PROPERTY OWNER'S ASSOCIATION, INC.) SPECIAL SANITARY SEWER AND/OR DRAINAGE EASEMENT
	SPECIAL UTILITY EASEMENT (SANITARY SEWER AND/OR DRAINAGE)

NOTE:
LOT V-1 STRUCTURES MUST HAVE A MINIMUM
FINISHED FLOOR ELEVATION OF 332.0 FEET (MSL).



SPECIAL UTILITY EASEMENTS
LOTS V-3, V-6, V-7, V-9,
AND V-16 HAVE SPECIAL
WIDTH EASEMENTS.



DUNGAN
ENGINEERING, PA
1574 HIGHWAY 98 EAST
COLUMBIA, MS 39429
601-731-2600

OWNER/DEVELOPER:
REUNION, INC.
105 REUNION BOULEVARD
MADISON, MS 39110

THIS PLAT IS SUBJECT TO THE TERMS AND CONDITIONS
OF THAT CERTAIN INFRASTRUCTURE AGREEMENT BY
AND BETWEEN REUNION, INC., REUNION PUBLIC
IMPROVEMENTS DISTRICT, AND THE CITY OF MADISON,
MISSISSIPPI, DATED THE 18th DAY OF NOVEMBER, 2008
(THE "AGREEMENT")

DRAFT